

Voltage Transformer Unit for Metering up to 24 kV

Introduction

CM is part of SM6 product range. This SM6 range is made up of modular unit and used for the MV section of MV/LV substation in secondary distribution system up to 24 kV.

Application :

CM is voltage transformer unit equipped with fuse and disconnecting switch and usually used for metering.

This cubicle is normally installed together in the system with other part of SM6 product range such as IM, IMC, QM, QMC, PM, DM1 DM2, etc., in accordance with the design of a distribution system.

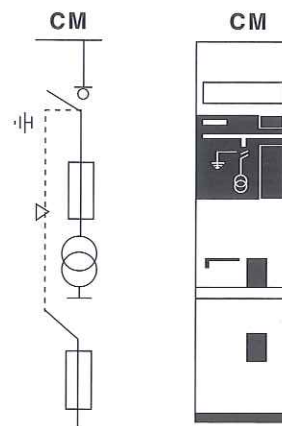
Basic Equipment :

- Disconnecter and earthing switch
- Three phase busbar 630 A
- CS operating mechanism
- Three 6.3 A solefuses
- LV circuit isolating switch
- LV fuses
- Three voltage transformers (phase to earth)
- Heater 50 W, 220 V

Optional Accessories :

- Large LV compartment on top of the cubicle, h = 450 mm
- Auxiliary contacts
- Indicating contact for blown fuses

* Other requirements please consult us



Standard Recommendation :

IEC standard :
IEC 298, 265, 129, 694, 420, 56

UTE standard :
NFC 13.100, 13.200, 64.130, 64.160

EDF specification :
HNI 64-S-41, 64-S-43
SNI K-29-HB-01
K-30-HB-02

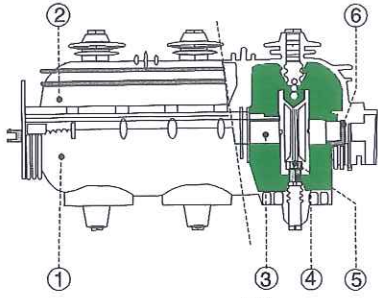
Colour :
White RAL 9002 Smooth
Grey RAL 7030 Smooth (option)

Characteristic :

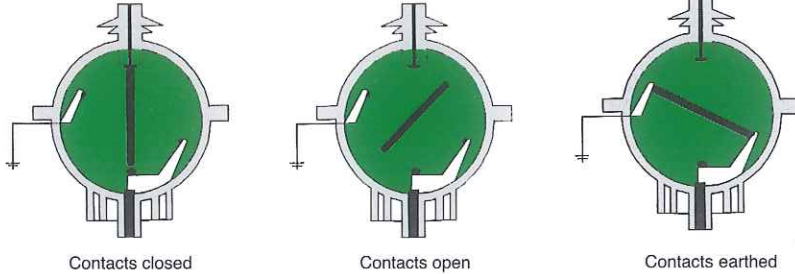
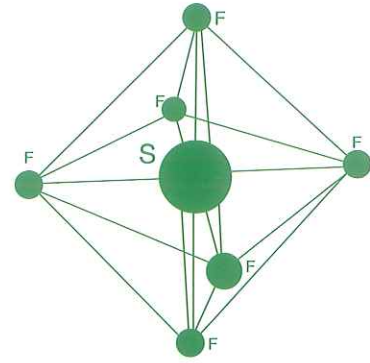
Rated maximum Voltage (kV)	12		24	
	7.2	12	17.5	24
Rated voltage (kVrms)				
Rated insulation level				
- 50Hz for 1 min (kVrms)	20	28	38	50
- impulse 1.2/50 μ s (kVp)	60	75	95	125
Rated current				
- load break switch (A)		100		100
- busbar (A)		630		630
Short time withstand current				
- for rated current 630 A (kA / 1s)		12.5/14.5		12.5/14.5
		16		16
		20		20

Making capacity is equal to 2.5 times the short-time withstand current

Load break switch or disconnecter and earthing switch :



1. enclosure
2. cover
3. operating shaft
4. fixed contact
5. moving contact
6. seal



SM6 load break switches and earthing switches use sulphur hexafluoride gas (SF₆) for insulation and breaking. The active parts are placed in an insulated enclosure in accordance with the definition of IEC 56 / Appendix EE (1987 edition) for sealed pressure system. These devices offer remarkable characteristic:

- long life service
- maintenance - free active parts
- high electrical endurance
- over - voltage levels very low
- safety operation

Over all dimension	IM	IMC
Width	500 mm	500 mm
Depth	940 mm	940 mm
Height	1600 mm	1600 mm
LV compartment (h') (option)	450 mm	450 mm
Approximate weight	120 kg	200 kg
Cable connect height (measure from floor)	950 mm	450 mm

Cable entry or exit :

- through left or right side
- rear or front with conduit
- top entry and bottom entry type (for top entry the depth of cubicle is added by 600 mm and the height is added by 400 mm)

Current transformer for IMC unit : transformer type ARM2/N2F

- single primary winding
- double secondary winding for measurement and protection.

Short-time withstand current I_{th} (kA)

I _n (A)	50	75	100	150	400	600
I _{th} (kA)	12.5	16		25		
t (s)	0.8	1	08		1	
measurement and protection*	5A	7.5 VA - class 0.5		1A	1 VA - 10P20	
	5A	10 VA - 5P10				

- * CT for overload protection please consult us
- * Ring CT's for IM please consult us

PT. Schneider Indonesia

Sales Office

Head Office Jakarta

Ventura Building 7th fl
Jl. R.A. Kartini Kav.26
Cilandak, Jakarta 12430
Ph. (62) (021) 750 4406
Fax. (62) (021) 750 4415/16

Bandung

Komplek Mal Setrasari Blok B 2/17
Jl. Prof. Sutarni, Bandung - 40164
Ph. (62) (022) 201 6122
Fax. (62) (022) 201 9133

Balikpapan

Komplek Ruko Little China
Blok AB 6 No. 7, Balikpapan Baru
Balikpapan 76114
Ph. (62) (0542) 876722
Fax. (62) (0542) 873709

Lampung

Villa Citra I Blok F No. 10
Tanjung Karang - Bandar Lampung
Ph. (62) (0721) 250 152
Fax. (62) (0721) 250 152

Medan

UNIPLAZA Building, East Tower, 3rd fl.
Jl. Letjend M.T. Haryono A-1
Medan 20231
Ph. (62) (061) 457 9006, 455 5061
Fax. (62) (061) 455 5153

Makassar

Fajar Graha Pena Building Makassar
9th fl. Kav. 904
Jl. Urip Sumorhardjo No. 20
Makassar 90234
Ph. (62) (0411) 420 760
Fax. (62) (0411) 420 759

Palembang

Graha Telekomunikasi, 7th fl.
Jl. Jend Sudirman No. 459
Palembang 30129
Ph. (62) (0711) 312 002
Fax. (62) (0711) 319 669

Semarang

Grinatha Building 2nd fl. (Bank Jateng)
Jl. Pemuda 142, Semarang
Ph. (62) (024) 356 0230, 356 0231
Fax. (62) (024) 356 3313

Surabaya

Graha Pangeran Building 10th fl.
Unit 10 D Jl. Jendral A. Yani 286
Surabaya
Ph. (62) (031) 828 8333 (Hunting)
Fax. (62) (031) 829 9901/02

Factory

Batam Factory

Batamindo Industrial Park, Jl. Beringin Blok 4,
Muka Kuning, Batam Island 29433
Ph. (62) (0770) 611 133
Fax. (62) (0770) 611 134

Cikarang Factory

Engineering & Manufacturing
East Jakarta Industrial Park (EJIP)
Plot 4B No. 1-2, Lemah Abang
Bekasi - 17550, Jawa Barat
Ph. (62) (021) 897 0203-8
Fax. (62) (021) 897 0209, 897 0085

PT Schneider Electric IT Indonesia

Ventura Building 1st fl
Jl. R.A. Kartini, Kav 26 Cilandak
Jakarta 12430
Ph. (62) (021) 7590 2911
Fax. (62) (021) 7590 2912

Energy Business

Jl. Pulo Buaran Raya Blok III EE Kav. 2-3-6
Kawasan Industri Pulo Gadung
Jakarta 13920
Ph. (62) (021) 245 75 700
Fax. (62) (021) 460 32 01